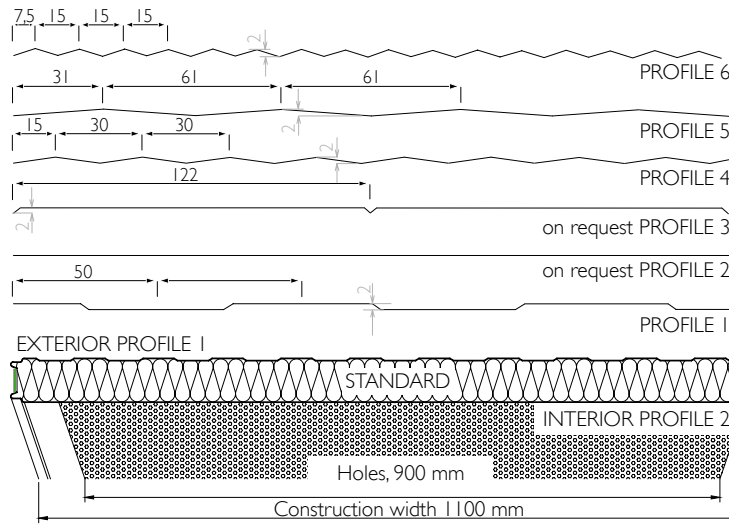


Acoustic – WP-A

SOUND PROTECTION

WP-A PROFILES



BRUCHAPanel Acoustic – WP-A provides a practical and clean solution for **sound absorption** and insulation against airborne sound, for interior walls and false ceilings, significantly improving room acoustics.

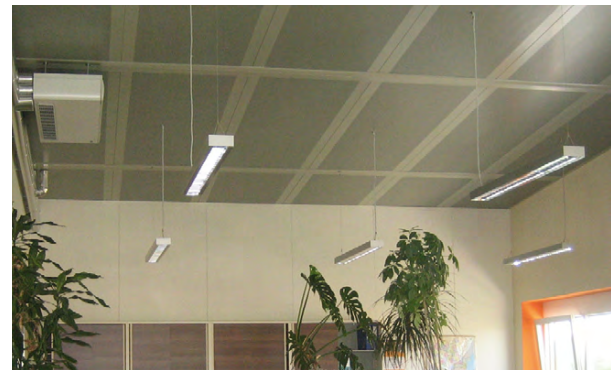
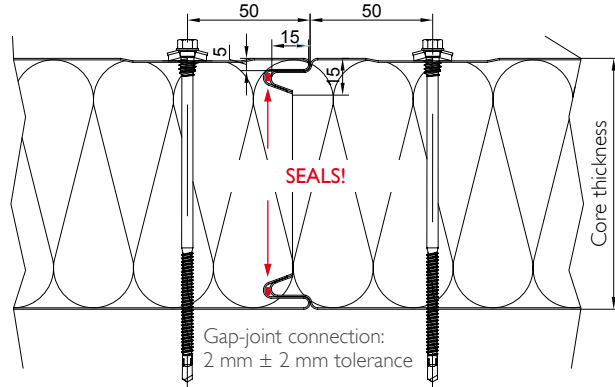
Following definition of the technical and static feasibility the acoustic panels may also be used for wall cladding of unheated buildings.

vapour brake (PE foil)
SEALS!

Metal gauge: double-sided 0.6 mm

Bore diameter: 3 mm round bore 5 mm spacing

WP-A JOINT CONNECTION



Panel Type	core thickness mm	U-value W/m ² K acc. EN 12667 incl. joint	U-value W/m ² K acc. EN 14509 incl. joint	Weight kg/m ²	Sound insulation Rw dB	Sound absorption loss α _w	Fire resistance*
WP-A 60	60	0.64	0.70	15.7	~32	0.85	EI 30
WP-A 80	80	0.48	0.52	18.1	~32	0.85	EI 60
WP-A 100	100	0.39	0.41	20.5	~32	0.85	EI 90
WP-A 120	120	0.33	0.35	22.9	~32	0.85	EI 120
WP-A 150	150	0.26	0.29	26.5	~32	0.85	EI 120
WP-A 160	160	0.25	0.27	27.7	~32	0.85	EI 120
WP-A 200	200	0.20	0.22	32.5	~32	0.85	EI 120
WP-A 240	240	0.17	0.18	37.2	~32	0.85	EI 120

*Certificates on request

Manufacturing tolerances:	in acc. with EN 14509
Manufactured lengths:	max. 15.0 m (extra long transport required above 13.6 m)
Sound absorption loss α_w:	0.85 gem. Prüfbericht MA39-VFA 2008-0448.01
Absorber class:	B
Approval:	According to the [General Technical Approval] Z-10.49-610

DESIGN AND SURFACES Standard

coil-coated, galvanised flashings

Exterior:

- Visible side with 25 µm polyester coating with a protective PVC film to be removed when construction work is complete (protect from direct sunlight).
- Profile 1 = Standard, other profiles - see **WP-A PROFILES** · Page 44
- Metal gauge: 0.6 mm (smaller gauge on request)

Interior:

- Visible side 25 µm polyester coating with a protective PVC film to be removed when construction work is complete, no later than 10 weeks from production date - visible on longitudinal joint of panel (protect from direct sunlight).
- Profile 2
- Hole proportion: 32,5 %
- Bore diameter: 3 mm round bore, offset
- Holes: DIN RV 3-5 (R3T5) (730-000)
- Metal gauge: 0.6 mm (smaller gauge on request)

Insulation core:

- Structural, web-oriented mineral fibre wool
- Shear resistant bond with sheet steel covers
- Density approx. 120 kg/m³, 140 kg/m³ available on request

Fire behaviour:

- Acc. EN 13501-1, Euroclass A2s1 d0, **non-combustible.**
- Membrane: glass fibre mat SM60/10 for non-drip protection

Exterior and interior standard colours:

- Acc. to BASIC range of colours (Page BRUCHA•11).

Panel connection:

- By „tongue and groove system“.
The panels interlink precisely, with no thermal bridge.

Vapour diffusion:

- Due to the vapour permeable inside cover, the use as an exterior wall for wet rooms and heated buildings is only conditionally possible, or not recommended.